

FOR SALE



**RETAIL OUTLOT AVAILABLE
1.99 ACRES**

RETAIL OUTLOT AVAILABLE I-94 & HWY 20, MOUNT PLEASANT

JOHN B. KUHN, CCIM, CRX **DAN MCBRIDE**
PRINCIPAL REAL ESTATE ADVISOR
414 203 3030 414.203.3039
jkuhn@boerke.com dmcbride@boerke.com

MILWAUKEE OFFICE
731 N Jackson Street
Suite 700
Milwaukee, WI 53202

MADISON OFFICE
4602 S Biltmore Lane
Suite 112
Madison, WI 53718

Boerke.com

The Boerke Company, Inc. / Independently Owned and Operated / A Member of the Cushman & Wakefield Alliance

Cushman & Wakefield Copyright 2021. No warranty or representation, express or implied, is made to the accuracy or completeness of the information contained herein, and same is submitted subject to errors, omissions, change of price, rental or other conditions, withdrawal without notice, and to any special listing conditions imposed by the property owner(s). As applicable, we make no representation as to the condition of the property (or properties) in question.

FOR SALE
MOUNT PLEASANT
OUTLOT OPPORTUNITY
**PROPERTY
OVERVIEW**

Property Size: 1.99 Gross Acres
Land Use Plan: Commercial
Utilities: At Hwy 20 & Frontage Road

Features

- Located at the intersection of I-94 and Hwy 20
- Close proximity to the new Aurora Hospital
- Kwik Trip, Burger King, Qdoba and McDonalds all located on intersection
- Visible from the freeway
- Located in high development Racine County

Asking Price

- \$497,500 (\$250,000 per Acre)



JOHN B. KUHN, CCIM, CRX
PRINCIPAL
414.203.3030
jkuhn@boerke.com

DAN MCBRIDE
REAL ESTATE ADVISOR
414.203.3039
dmcbride@boerke.com

MILWAUKEE OFFICE
731 N Jackson Street
Suite 700
Milwaukee, WI 53202

MADISON OFFICE
4602 S Biltmore Lane
Suite 112
Madison, WI 53718

Boerke.com

The Boerke Company, Inc. / Independently Owned and Operated / A Member of the Cushman & Wakefield Alliance

Cushman & Wakefield Copyright 2021. No warranty or representation, express or implied, is made to the accuracy or completeness of the information contained herein, and same is submitted subject to errors, omissions, change of price, rental or other conditions, withdrawal without notice, and to any special listing conditions imposed by the property owner(s). As applicable, we make no representation as to the condition of the property (or properties) in question.

FOR SALE
MOUNT PLEASANT
OUTLOT OPPORTUNITY
**PROPERTY
OVERVIEW**



JOHN B. KUHN, CCIM, CRX
PRINCIPAL
414.203.3030
jkuhn@boerke.com

DAN MCBRIDE
REAL ESTATE ADVISOR
414.203.3039
dmcbride@boerke.com

MILWAUKEE OFFICE
731 N Jackson Street
Suite 700
Milwaukee, WI 53202

MADISON OFFICE
4602 S Biltmore Lane
Suite 112
Madison, WI 53718

Boerke.com

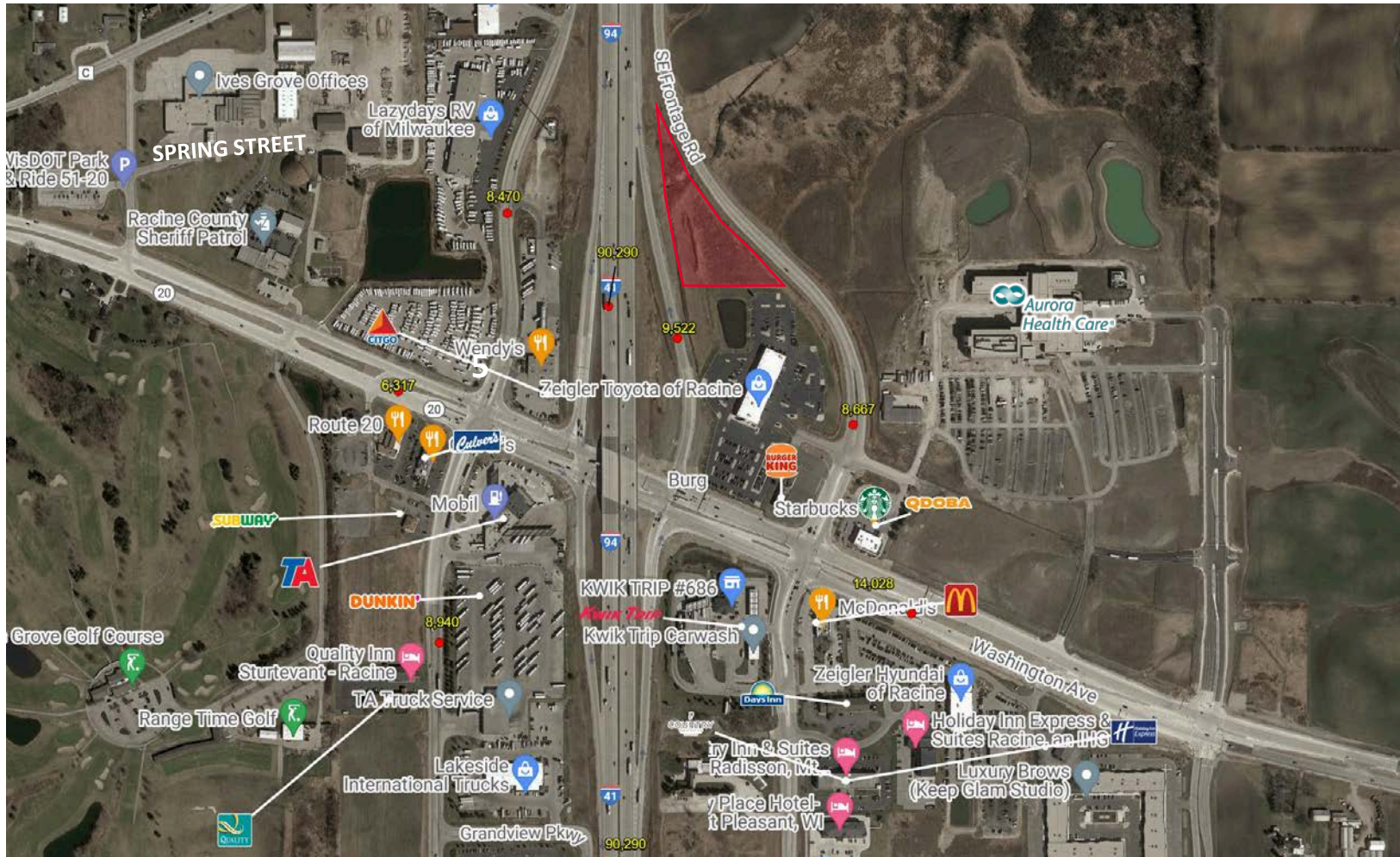
The Boerke Company, Inc. / Independently Owned and Operated / A Member of the Cushman & Wakefield Alliance

Cushman & Wakefield Copyright 2021. No warranty or representation, express or implied, is made to the accuracy or completeness of the information contained herein, and same is submitted subject to errors, omissions, change of price, rental or other conditions, withdrawal without notice, and to any special listing conditions imposed by the property owner(s). As applicable, we make no representation as to the condition of the property (or properties) in question.

FOR SALE
MOUNT PLEASANT
OUTLOT OPPORTUNITY

AREA

RETAIL MAP



JOHN B. KUHN, CCIM, CRX
PRINCIPAL
414.203.3030
jkuhn@boerke.com

DAN MCBRIDE
REAL ESTATE ADVISOR
414.203.3039
dmcbride@boerke.com

MILWAUKEE OFFICE
731 N Jackson Street
Suite 700
Milwaukee, WI 53202

MADISON OFFICE
4602 S Biltmore Lane
Suite 112
Madison, WI 53718

Boerke.com

The Boerke Company, Inc. / Independently Owned and Operated / A Member of the Cushman & Wakefield Alliance

Cushman & Wakefield Copyright 2021. No warranty or representation, express or implied, is made to the accuracy or completeness of the information contained herein, and same is submitted subject to errors, omissions, change of price, rental or other conditions, withdrawal without notice, and to any special listing conditions imposed by the property owner(s). As applicable, we make no representation as to the condition of the property (or properties) in question.

FOR SALE
MOUNT PLEASANT
OUTLOT OPPORTUNITY

DISTANCE MAP

DRIVE TIMES TO KEY AREAS



DOWNTOWN
MILWAUKEE
24 MILES



GENERAL
MITCHELL
INTERNATIONAL
AIRPORT
18 MILES



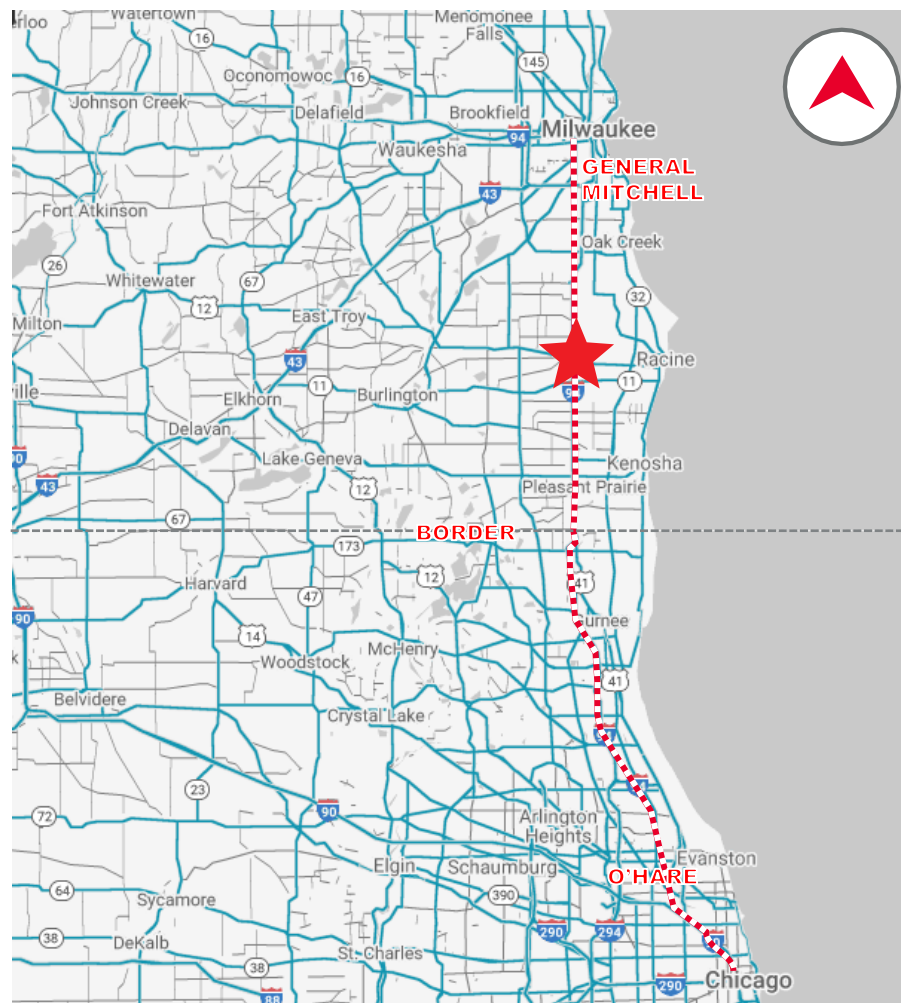
O'HARE
INTERNATIONAL
AIRPORT
56 MILES



DOWNTOWN
CHICAGO
69 MILES



IL/WI BORDER
17 MILES



JOHN B. KUHN, CCIM, CRX
PRINCIPAL
414.203.3030
jkuhn@boerke.com

DAN MCBRIDE
REAL ESTATE ADVISOR
414.203.3039
dmcbride@boerke.com

MILWAUKEE OFFICE
731 N Jackson Street
Suite 700
Milwaukee, WI 53202

MADISON OFFICE
4602 S Biltmore Lane
Suite 112
Madison, WI 53718

Boerke.com

The Boerke Company, Inc. / Independently Owned and Operated / A Member of the Cushman & Wakefield Alliance

Cushman & Wakefield Copyright 2021. No warranty or representation, express or implied, is made to the accuracy or completeness of the information contained herein, and same is submitted subject to errors, omissions, change of price, rental or other conditions, withdrawal without notice, and to any special listing conditions imposed by the property owner(s). As applicable, we make no representation as to the condition of the property (or properties) in question.

FOR SALE
MOUNT PLEASANT
OUTLOT OPPORTUNITY

AREA

DEMOGRAPHICS

POPULATION **1 MILE RADIUS** **3 MILE RADIUS** **5 MILE RADIUS**

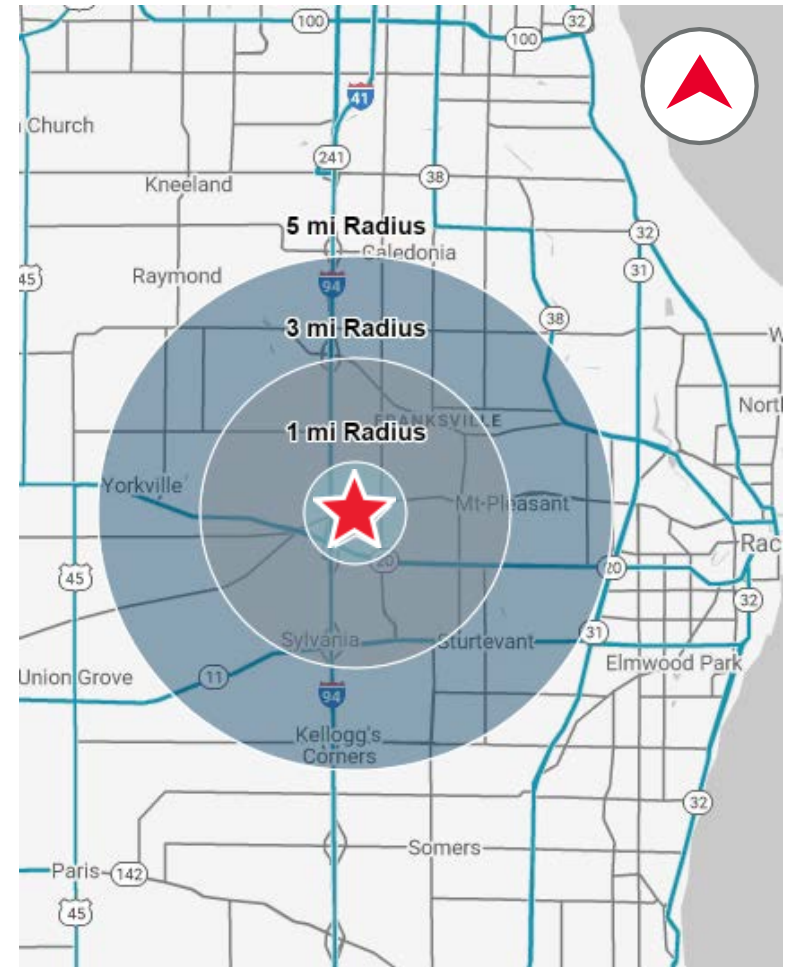
Estimated Population (2021)	559	7,715	30,101
Median Age (2021)	47.4	41.9	44.4
Any College (Some College or Higher)	255	3,407	13,782
College Degree + (Bachelor Degree or Higher)	114	1,551	6,628

HOUSEHOLDS **1 MILE RADIUS** **3 MILE RADIUS** **5 MILE RADIUS**

Estimated Households (2021)	212	2,549	12,164
Estimated Average Household Income (2021)	\$109,050	\$99,763	\$89,984

WORKFORCE **1 MILE RADIUS** **3 MILE RADIUS** **5 MILE RADIUS**

White Collar Workers (2021)	146	1,753	8,264
Blue Collar Workers (2021)	113	1,378	5,666



JOHN B. KUHN, CCIM, CRX
PRINCIPAL
414.203.3030
jkuhn@boerke.com

DAN MCBRIDE
REAL ESTATE ADVISOR
414.203.3039
dmcbride@boerke.com

MILWAUKEE OFFICE
731 N Jackson Street
Suite 700
Milwaukee, WI 53202

MADISON OFFICE
4602 S Biltmore Lane
Suite 112
Madison, WI 53718

Boerke.com

The Boerke Company, Inc. / Independently Owned and Operated / A Member of the Cushman & Wakefield Alliance

Cushman & Wakefield Copyright 2021. No warranty or representation, express or implied, is made to the accuracy or completeness of the information contained herein, and same is submitted subject to errors, omissions, change of price, rental or other conditions, withdrawal without notice, and to any special listing conditions imposed by the property owner(s). As applicable, we make no representation as to the condition of the property (or properties) in question.

CONTACT INFORMATION

**JOHN B. KUHN, CCIM, CRX
PRINCIPAL**

jkuhn@boerke.com

414.203.3030

**DANIEL MCBRIDE
REAL ESTATE ADVISOR**

dmcbride@boerke.com

414.203.3039

MILWAUKEE OFFICE

731 N Jackson Street
Suite 700
Milwaukee, WI 53202

MADISON OFFICE

4602 S Biltmore Lane
Suite 112
Madison, WI 53718

Boerke.com



The Boerke Company, Inc. / Independently Owned and Operated / A Member of the Cushman & Wakefield Alliance

Cushman & Wakefield Copyright 2021. No warranty or representation, express or implied, is made to the accuracy or completeness of the information contained herein, and same is submitted subject to errors, omissions, change of price, rental or other conditions, withdrawal without notice, and to any special listing conditions imposed by the property owner(s). As applicable, we make no representation as to the condition of the property (or properties) in question.

STATE OF WISCONSIN

DISCLOSURE TO NON-RESIDENTIAL CUSTOMERS

Prior to negotiating on your behalf the brokerage firm, or an agent associated with the firm, must provide you the following disclosure statement:

DISCLOSURE TO CUSTOMERS

You are a customer of the brokerage firm (hereinafter Firm). The Firm is either an agent of another party in the transaction or a subagent of another firm that is the agent of another party in the transaction. A broker or a salesperson acting on behalf of the Firm may provide brokerage services to you. Whenever the Firm is providing brokerage services to you, the Firm and its brokers and salespersons (hereinafter Agents) owe you, the customer, the following duties:

- (a) The duty to provide brokerage services to you fairly and honestly.
- (b) The duty to exercise reasonable skill and care in providing brokerage services to you.
- (c) The duty to provide you with accurate information about market conditions within a reasonable time if you request it, unless disclosure of the information is prohibited by law.
- (d) The duty to disclose to you in writing certain Material Adverse Facts about a property, unless disclosure of the information is prohibited by law. (See Definition of Material Adverse Facts below).
- (e) The duty to protect your confidentiality. Unless the law requires it, the Firm and its Agents will not disclose your confidential information or the confidential information of other parties.
- (f) The duty to safeguard trust funds and proposals in an objective and unbiased manner and disclose the advantages and disadvantages of the proposals. other property held by the Firm or its Agents.
- (g) The duty, when negotiating, to present contract proposals in an objective and unbiased manner and disclose the advantages and disadvantages of the proposals.
- Please review this information carefully. An Agent of the Firm can answer your questions about brokerage services, but if you need legal advice, tax advice, or a professional home inspection, contact an attorney, tax advisor, or home inspector. This disclosure is required by section 452.135 of the Wisconsin statutes and is for information only. It is a plain-language summary of the duties owed to a customer under section 452.133(1) of the Wisconsin statutes.

CONFIDENTIALITY NOTICE TO CUSTOMERS

The Firm and its Agents will keep confidential any information given to the Firm or its Agents in confidence, or any information obtained by the Firm and its Agents that a reasonable person would want to be kept confidential, unless the information must be disclosed by law or you authorize the Firm to disclose particular information. The Firm and its Agents shall continue to keep the information confidential after the Firm is no longer providing brokerage services to you.

- The following information is required to be disclosed by law:
 1. Material Adverse Facts, as defined in Wis. Stat. § 452.01(5g) (see "Definition of Material Adverse Facts" below).
 2. Any facts known by the Firm or its Agents that contradict any information included in a written inspection report on the property or real estate that is the subject of the transaction.

To ensure that the Firm and its Agents are aware of what specific information you consider confidential, you may list that information below. At a later time, you may also provide the Firm or its Agents with other Information you consider to be confidential.

CONFIDENTIAL INFORMATION:

NON- CONFIDENTIAL INFORMATION (the following information may be disclosed by the Firm and its Agents):

(Insert information you authorize to be disclosed, such as financial qualification information.)

DEFINITION OF MATERIAL ADVERSE FACTS

A "Material Adverse Fact" is defined in Wis. Stat. § 452.01(5g) as an Adverse Fact that a party indicates is of such significance, or that is generally recognized by a competent licensee as being of such significance to a reasonable party, that it affects or would affect the party's decision to enter into a contract or agreement concerning a transaction or affects or would affect the party's decision about the terms of such a contract or agreement.

An "Adverse Fact" is defined in Wis. Stat. § 452.01(1e) as a condition or occurrence that a competent licensee generally recognizes will significantly and adversely affect the value of the property, significantly reduce the structural integrity of improvements to real estate, or present a significant health risk to occupants of the property; or information that indicates that a party to a transaction is not able to or does not intend to meet his or her obligations under a contract or agreement made concerning the transaction.

NOTICE ABOUT SEX OFFENDER REGISTRY

You may obtain information about the sex offender registry and persons registered with the registry by contacting the Wisconsin Department of Corrections on the Internet at <http://www.doc.wi.gov> or by telephone at 608-240-5830.