



**Robert O. Fulford II**  
Real Estate Advisor  
608.716.3090  
rfulford@boerke.com

**Cushman & Wakefield | Boerke**  
25 W. Main Street  
5th Floor  
Madison, WI 53703

*The Boerke Company / Independently Owned and Operated / A Member of the Cushman & Wakefield Alliance*

Cushman & Wakefield Copyright 2020. No warranty or representation, express or implied, is made to the accuracy or completeness of the information contained herein, and same is submitted subject to errors, omissions, change of price, rental or other conditions, withdrawal without notice, and to any special listing conditions imposed by the property owner(s). As applicable, we make no representation as to the condition of the property (or properties) in question.





Building 1



Building 2



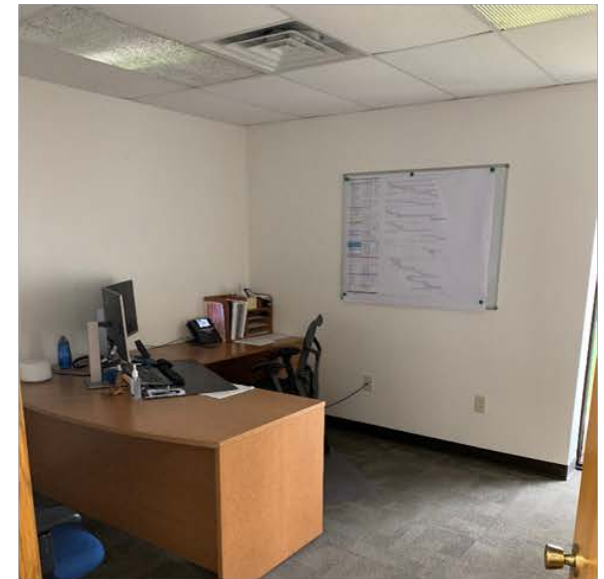
Paved and Fenced Outside Storage Area



Manufacturing Space



Manufacturing Space



Office Area

**Robert O. Fulford II**  
Real Estate Advisor  
608.716.3090  
rfulford@boerke.com

**Cushman & Wakefield | Boerke**  
25 W. Main Street  
5th Floor  
Madison, WI 53703

*The Boerke Company / Independently Owned and Operated / A Member of the Cushman & Wakefield Alliance*

Cushman & Wakefield Copyright 2020. No warranty or representation, express or implied, is made to the accuracy or completeness of the information contained herein, and same is submitted subject to errors, omissions, change of price, rental or other conditions, withdrawal without notice, and to any special listing conditions imposed by the property owner(s). As applicable, we make no representation as to the condition of the property (or properties) in question.

## SITE AND BUILDINGS OVERVIEW

<b>Total Building Size:</b>	<u>Building 1</u>	<u>Building 2</u>
	28,920 Total SF +/-5,000 SF Office Area	9,600 Total SF +/-800 SF Production Area
<b>Clear Height:</b>	16-18'	16-18'
<b>Docks:</b>	One (1) dock	N/A
<b>Drive-Ins:</b>	One (1) drive-in	Four (4) drive-in doors
<b>Sprinkler:</b>	N/A	N/A
<b>Power:</b>	600 AMPs, 3-Phase	200 AMPs, 3-Phase
<b>HVAC:</b>	100% air-conditioned and forced-air heat	Forced-air heat
<b>Site Size:</b>	5.62 Combined Acres	
<b>Zoning:</b>	C-2 General Commercial	
<b>Tax Key(s):</b>	0910-314-9502-0 0910-314-8330-7 0910-314-8395-0	

## PROPERTY FEATURES

- Visibility from Interstate 39/90 (59,065 vehicles per day)
- Ideal manufacturing property with heavy power, compressed air-lines, and eight overhead cranes in place
- Paved outside storage area
- Land available for expansion

## CRANE FEATURES

- Two (2) overhead bridge cranes – one is 3 ton & one is ½ ton
- Two (2) post cranes – both 1 ton
- Seven (7) 7 jib cranes – five are 1 ton & two are ½ ton

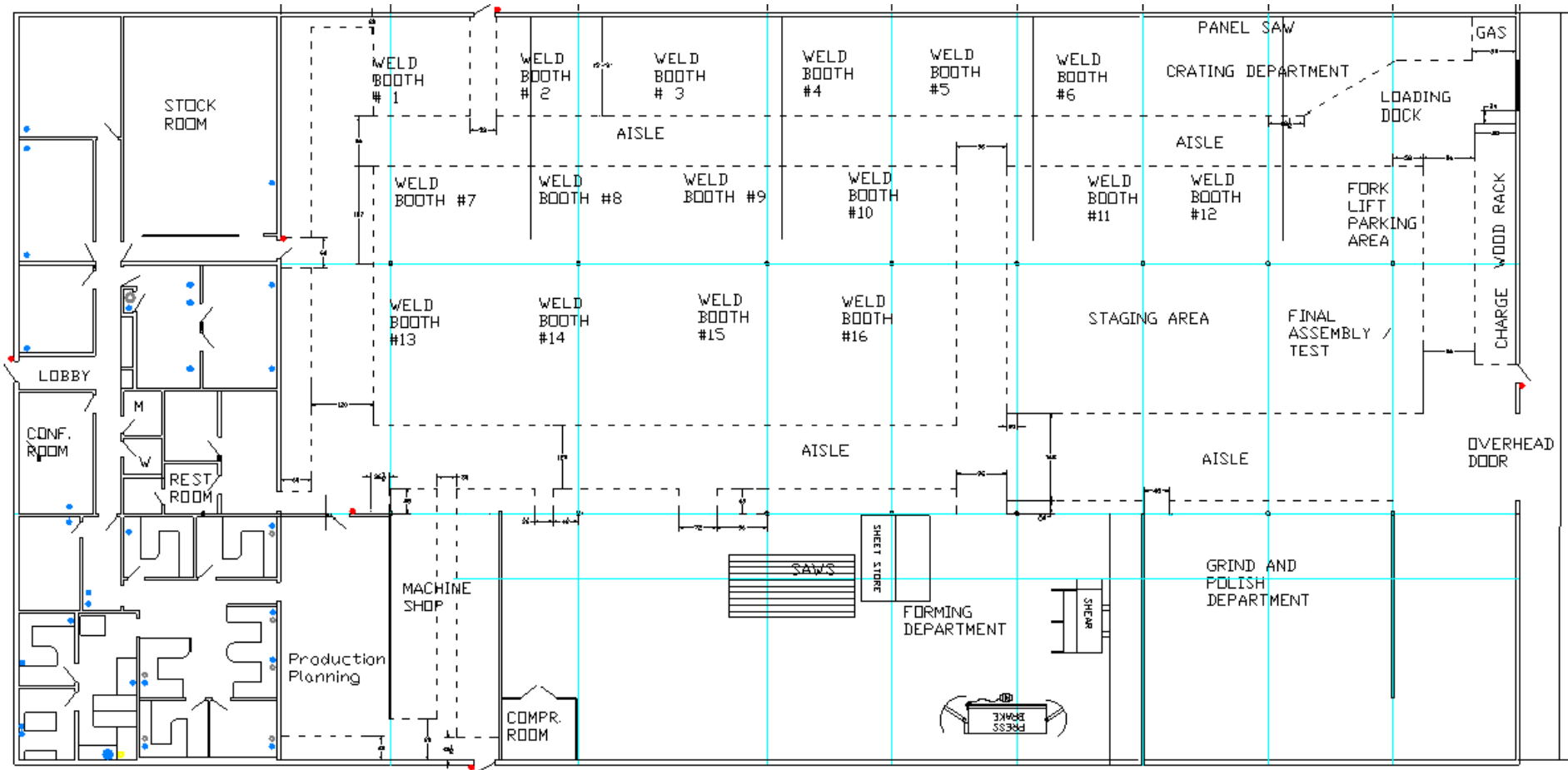
## ECONOMICS

<b>Sales Price:</b>	<b>\$2,889,000</b>
<b>Taxes (2019):</b>	<b>\$24,280</b>

**Robert O. Fulford II**  
Real Estate Advisor  
608.716.3090  
rfulford@boerke.com

**Cushman & Wakefield | Boerke**  
25 W. Main Street  
5th Floor  
Madison, WI 53703

**FLOOR PLAN - BUILDING 1**



- CAT 5 ETHERNET CABLE LOCATIONS (BLUE)
- CAT 3 TELEPHONE CABLE LOCATIONS (GREY)
- CAT 5 BAR CODE CABLE LOCATIONS (YELLOW)
- ACCESS CARD READERS

**Robert O. Fulford II**  
 Real Estate Advisor  
 608.716.3090  
 rfulford@boerke.com

**Cushman & Wakefield | Boerke**  
 25 W. Main Street  
 5th Floor  
 Madison, WI 53703

*The Boerke Company / Independently Owned and Operated / A Member of the Cushman & Wakefield Alliance*

Cushman & Wakefield Copyright 2020. No warranty or representation, express or implied, is made to the accuracy or completeness of the information contained herein, and same is submitted subject to errors, omissions, change of price, rental or other conditions, withdrawal without notice, and to any special listing conditions imposed by the property owner(s). As applicable, we make no representation as to the condition of the property (or properties) in question.



**PARCEL INFORMATION**

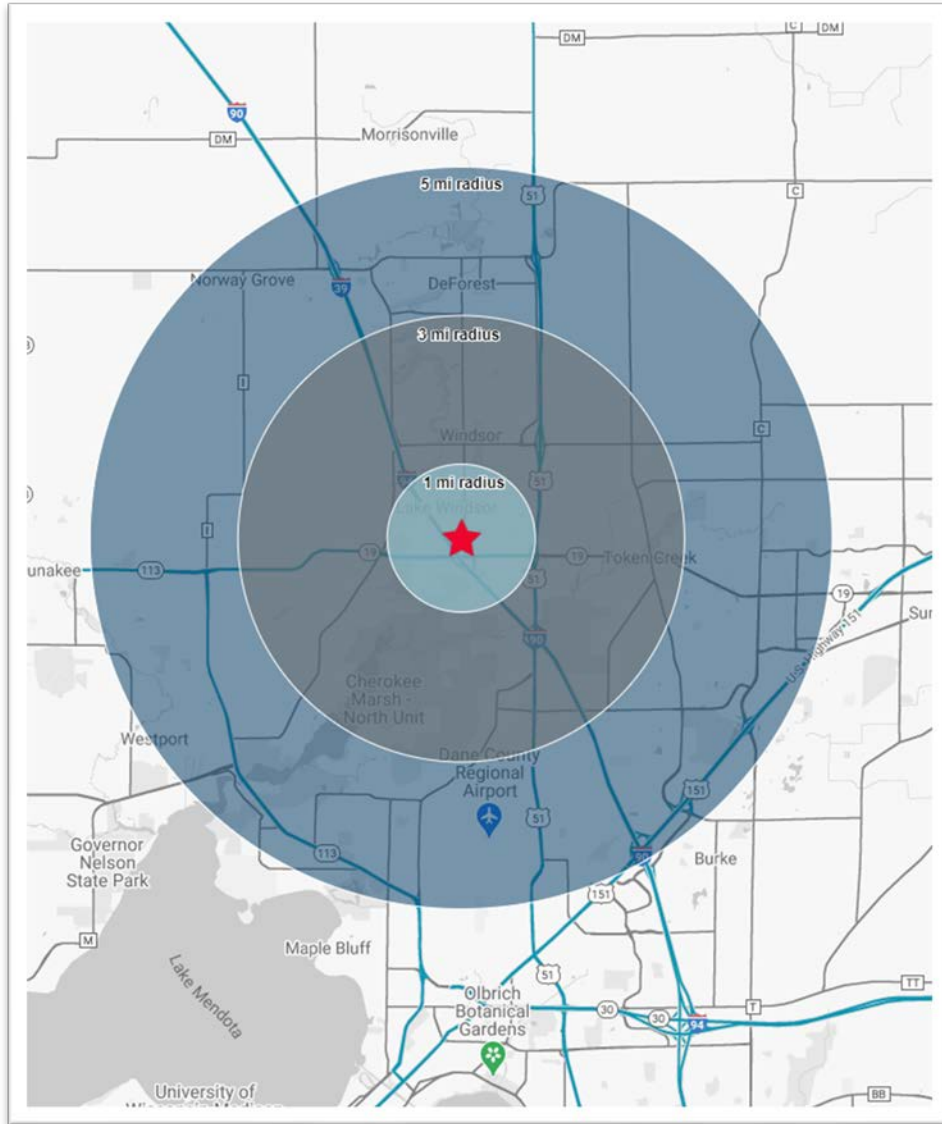


**Robert O. Fulford II**  
Real Estate Advisor  
608.716.3090  
rfulford@boerke.com

**Cushman & Wakefield | Boerke**  
25 W. Main Street  
5th Floor  
Madison, WI 53703


*The Boerke Company / Independently Owned and Operated / A Member of the Cushman & Wakefield Alliance*

Cushman & Wakefield Copyright 2020. No warranty or representation, express or implied, is made to the accuracy or completeness of the information contained herein, and same is submitted subject to errors, omissions, change of price, rental or other conditions, withdrawal without notice, and to any special listing conditions imposed by the property owner(s). As applicable, we make no representation as to the condition of the property (or properties) in question.

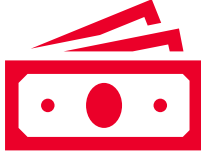


DEMOGRAPHICS	1 MILE RADIUS	3 MILE RADIUS	5 MILE RADIUS
Estimated Population (2020)	1,655	11,589	58,383
Daytime Population (2020)	3,820	8,767	54,055
Average HH Income (2020)	\$94,149	\$110,750	\$93,524
Median HH Income (2020)	\$110,676	\$99,323	\$83,679

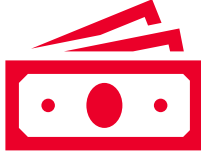
### 3 MILE INFORMATION



**8,767**  
Daytime  
Population



**\$110,750**  
Average HH  
Income

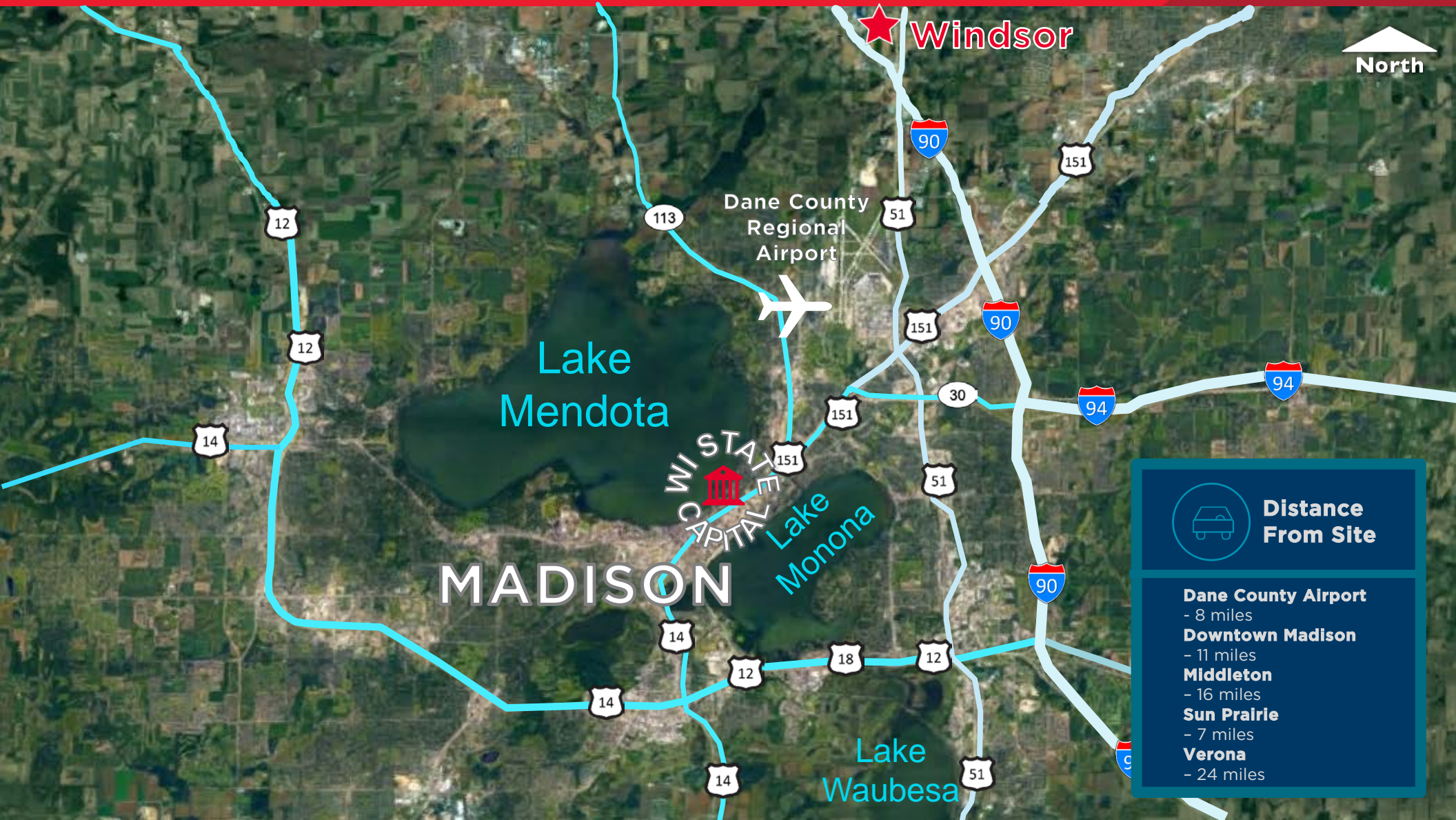


**\$99,323**  
Median HH  
Income

**Robert O. Fulford II**  
Real Estate Advisor  
608.716.3090  
rfulford@boerke.com

**Cushman & Wakefield | Boerke**  
25 W. Main Street  
5th Floor  
Madison, WI 53703





**Robert O. Fulford II**  
Real Estate Advisor  
608.716.3090  
rfulford@boerke.com

**Cushman & Wakefield | Boerke**  
25 W. Main Street  
5th Floor  
Madison, WI 53703

*The Boerke Company / Independently Owned and Operated / A Member of the Cushman & Wakefield Alliance*

Cushman & Wakefield Copyright 2020. No warranty or representation, express or implied, is made to the accuracy or completeness of the information contained herein, and same is submitted subject to errors, omissions, change of price, rental or other conditions, withdrawal without notice, and to any special listing conditions imposed by the property owner(s). As applicable, we make no representation as to the condition of the property (or properties) in question.

# STATE OF WISCONSIN BROKER DISCLOSURE

## To Non-Residential Customers

Prior to negotiating on your behalf the brokerage firm, or an agent associated with the firm, must provide you the following disclosure statement:

### DISCLOSURE TO CUSTOMERS

You are a customer of the brokerage firm (hereinafter Firm). The Firm is either an agent of another party in the transaction or a subagent of another firm that is the agent of another party in the transaction. A broker or a salesperson acting on behalf of the Firm may provide brokerage services to you. Whenever the Firm is providing brokerage services to you, the Firm and its brokers and salespersons (hereinafter Agents) owe you, the customer, the following duties:

- (a) The duty to provide brokerage services to you fairly and honestly.
- (b) The duty to exercise reasonable skill and care in providing brokerage services to you.
- (c) The duty to provide you with accurate information about market conditions within a reasonable time if you request it, unless disclosure of the information is prohibited by law.
- (d) The duty to disclose to you in writing certain Material Adverse Facts about a property, unless disclosure of the information is prohibited by law. (See Definition of Material Adverse Facts below).
- (e) The duty to protect your confidentiality. Unless the law requires it, the Firm and its Agents will not disclose your confidential information or the confidential information of other parties.
- (f) The duty to safeguard trust funds and proposals in an objective and unbiased manner and disclose the advantages and disadvantages of the proposals. other property held by the Firm or its Agents.
- (g) The duty, when negotiating, to present contract proposals in an objective and unbiased manner and disclose the advantages and disadvantages of the proposals.
- Please review this information carefully. An Agent of the Firm can answer your questions about brokerage services, but if you need legal advice, tax advice, or a professional home inspection, contact an attorney, tax advisor, or home inspector. This disclosure is required by section 452.135 of the Wisconsin statutes and is for information only. It is a plain-language summary of the duties owed to a customer under section 452.133(1) of the Wisconsin statutes.

### CONFIDENTIALITY NOTICE TO CUSTOMERS

The Firm and its Agents will keep confidential any information given to the Firm or its Agents in confidence, or any information obtained by the Firm and its Agents that a reasonable person would want to be kept confidential, unless the information must be disclosed by law or you authorize the Firm to disclose particular information. The Firm and its Agents shall continue to keep the information confidential after the Firm is no longer providing brokerage services to you.

- The following information is required to be disclosed by law:
  1. Material Adverse Facts, as defined in Wis. Stat. § 452.01(5g) (see "Definition of Material Adverse Facts" below).
  2. Any facts known by the Firm or its Agents that contradict any information included in a written inspection report on the property or real estate that is the subject of the transaction.

To ensure that the Firm and its Agents are aware of what specific information you consider confidential, you may list that information below. At a later time, you may also provide the Firm or its Agents with other information you consider to be confidential.

### CONFIDENTIAL INFORMATION:

### NON- CONFIDENTIAL INFORMATION (the following information may be disclosed by the Firm and its Agents):

(Insert information you authorize to be disclosed, such as financial qualification information.)

### DEFINITION OF MATERIAL ADVERSE FACTS

A "Material Adverse Fact" is defined in Wis. Stat. § 452.01(5g) as an Adverse Fact that a party indicates is of such significance, or that is generally recognized by a competent licensee as being of such significance to a reasonable party, that it affects or would affect the party's decision to enter into a contract or agreement concerning a transaction or affects or would affect the party's decision about the terms of such a contract or agreement.

An "Adverse Fact" is defined in Wis. Stat. § 452.01(1e) as a condition or occurrence that a competent licensee generally recognizes will significantly and adversely affect the value of the property, significantly reduce the structural integrity of improvements to real estate, or present a significant health risk to occupants of the property; or information that indicates that a party to a transaction is not able to or does not intend to meet his or her obligations under a contract or agreement made concerning the transaction.

### NOTICE ABOUT SEX OFFENDER REGISTRY

You may obtain information about the sex offender registry and persons registered with the registry by contacting the Wisconsin Department of Corrections on the Internet at <http://www.doc.wi.gov> or by telephone at 608-240-5830.